



ALASKA DIVISION OF HOMELAND SECURITY & EMERGENCY MANAGEMENT



SITUATION REPORT 24-338 • December 03, 2024

Toll-Free 1.800.478.2337

Anchorage Area 907.428.7000

SEOC 907.428.7100

<p><u>SEOC Preparedness Level</u> Level 1-Routine Operations</p>	<p>http://ready.alaska.gov</p>	<p><u>National Terrorism Advisory System:</u> Read the NTAS Bulletin here</p>
<p><u>Maritime Security (MARSEC)</u> Level:1- Minimum Appropriate Security Measures</p>	<p>WHO Novel Coronavirus Pandemic (COVID-19): 2019 Novel Coronavirus</p>	<p><u>Alaska Military Installation Force Protection</u> <u>Level:</u> FPCON Bravo</p>

(Significant changes from previous situation reports are red.)

Significant Issues:

2024 October West Coast Storm:

A joint Preliminary Damage Assessment team combined with State, FEMA, and SBA deployed to Kotzebue to develop information to support consideration of a request for federal assistance.

Russian Mission Water Outage:

SEOC received reports that the community water system had failed. DEC and regional tribal authorities were notified for response. AVCP is sending 20 cases of water and TKHC is sending a pallet of water to the community. Repairs for the failed water pump are ongoing and the SEOC is closely monitoring the event.

Ketchikan Landslide:

The community experienced a small landslide yesterday due to recent heavy rainfall. No injuries or damage to structures were reported. City staff is working with State geologists to monitor slope conditions. Further evaluations using a drone are pending. SEOC is standing by to assist as needed.

Department of Health (DOH):

For current information, see: <https://health.alaska.gov/dph/Pages/default.aspx>
<https://health.alaska.gov/dph/Emergency/Pages/prepared/default.aspx>

NTAS Bulletin:

The U.S. Department of Homeland Security issued an updated National Terrorism Advisory Bulletin on May 24, 2023. The current and expired bulletins can be viewed at the below link.

<https://www.dhs.gov/national-terrorism-advisory-system>

Travel Alerts and Conditions:

For current driving conditions, dial 511 or visit: <https://511.alaska.gov/>

Barry Arm Landslide / Tsunami Risk:

For the latest information on the Barry Arm Landslide and Tsunami risk, click here:

<https://dggs.alaska.gov/hazards/barry-arm-landslide.html>

Earthquakes:

United States Geological Service (USGS) Earthquake Information: <http://earthquake.usgs.gov/>

National Tsunami Warning Center: <http://tsunami.gov/>

Alaska Volcanoes:

Great Sitkin Alert Level: **Watch** and Aviation Color Code: **Orange**

Mt. Spurr Alert Level: **Advisory** and Aviation Color Code: **Yellow**

For Alaska Volcano updates, go to: <https://www.avo.alaska.edu/>

Air Quality Index (AQI) Advisories:

Stage 2 advisory for North Pole in effect.

For the most up-to-date Air Quality Index Advisories:

<http://dec.alaska.gov/Applications/Air/airtoolsweb/Home/Index>

Spills of Oil and Hazardous Substances:

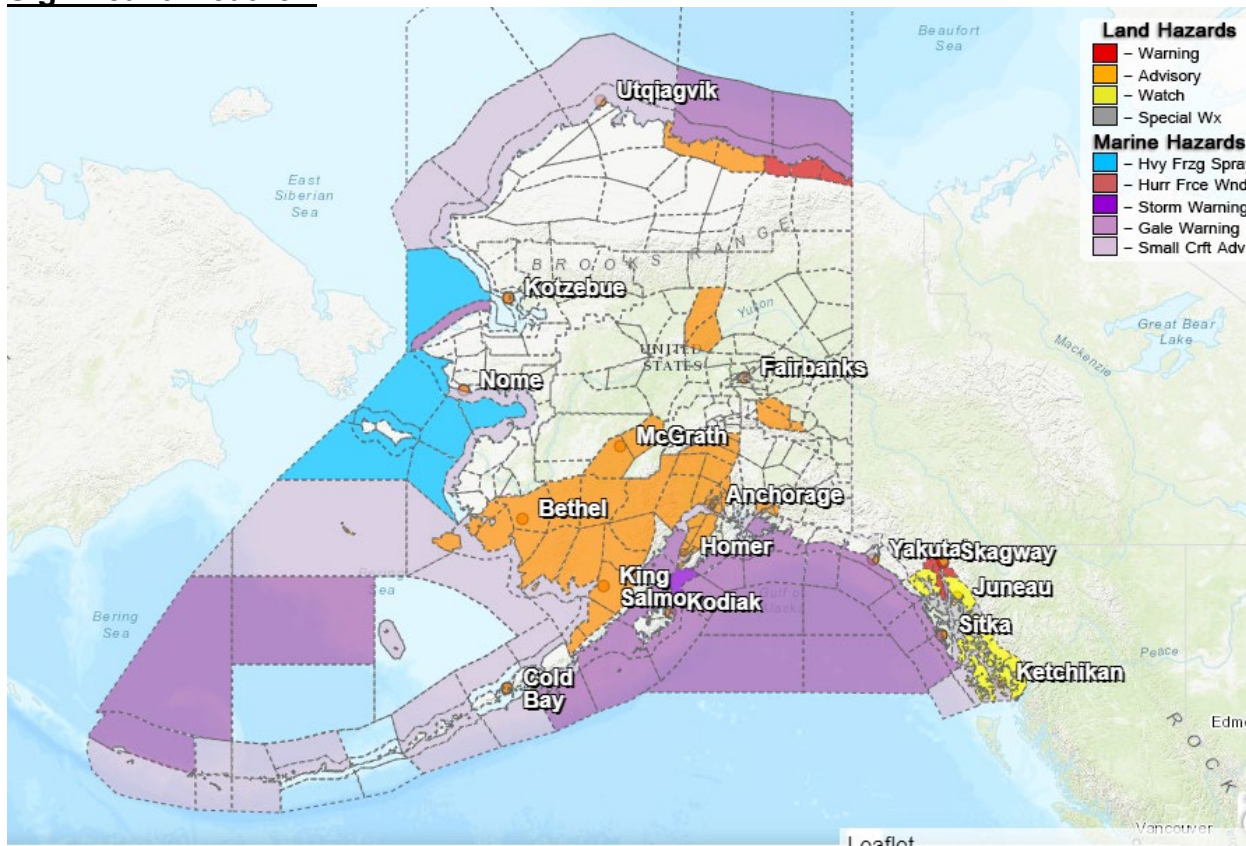
The Alaska Division of Environmental Conservation (ADEC) Spill Prevention and Response page is located at: <https://dec.alaska.gov/spar/>

Alaska Cyber Security Information:

State Employees may sign up for cybersecurity notifications and alerts at:

<https://oit.alaska.gov/security>

Significant Weather:



Winter Weather Advisory:

- **Northeast Prince William Sound** – In effect until midnight tonight for Thompson Pass and Keystone Canyon.
- **Anchorage, Susitna Valley and Matanuska Valley** – Remains in effect until 3am Wednesday.
- **Western Kenai Peninsula** – Remains in effect until 6am Wednesday.
- **Municipality of Skagway** – In effect from 9am this morning until 9pm tonight.
- **Bristol Bay** – Remains in effect until 5pm Wednesday.
- **Kuskokwim Delta and Lower Kuskokwim Valley** – Remains in effect until 3pm Thursday.
- **Upper Kuskokwim Valley** – In effect from 6pm this evening to 9pm Wednesday.
- **Dalton Highway Summits** – In effect until 3pm this afternoon.
- **Central Beaufort Sea Coast** – In effect from 3pm this afternoon to 6pm Wednesday.

Flood Advisory:

- **Ketchikan Gateway Borough** – Remains in effect until 7:45am Wednesday.
- **Prince of Wales Island** – Remains in effect until 9pm tonight.

Flood Watch:

- **Prince of Wales Island, Ketchikan Gateway Borough, Annette Island, Glacier Bay, City and Borough of Juneau, Western Kupreanof and Kuiu Island, City and Borough of Wrangell, City of Hyder** – Remains in effect through this evening.

Special Weather Statement:

- **Eastern Chichagof Island and Admiralty Island** – Rain on snow creating hazardous conditions

Ice Storm Warning:

- **Haines Borough and Klukwan** – In effect until 3pm this afternoon.

Wind Advisory:

- **Delta Junction** – Remains in effect until 9am Wednesday.
- **Eastern Alaska Range North of Trims Camp** – Remains in effect from midnight tonight to 6pm Wednesday.

Blizzard Warning:

- **Eastern Beaufort Sea Coast** – In effect from 3pm this afternoon to 6pm Wednesday.

For more information and the most current Weather, Watches/Warning/Advisories go to:

<https://www.weather.gov/arh/>

Avalanche Conditions:

Turnagain Pass – Considerable above 2500'

Summit Lake – Considerable above 2500'

For more information and the most current avalanche conditions go to: <https://alaskasnow.org/>

The Next Situation Report will be on **December 04, 2024**. An interim report will be prompted by a significant change in the situation or the threat level. This report is posted on the internet at

<https://ready.alaska.gov/sitrep>.

To register for email distribution, **PLEASE** go to:

<http://list.state.ak.us/mailman/listinfo/dhsem.situation.report>.

Direct questions regarding this report to the SEOC at 907-428-7100 or seoc@alaska.gov.